

Dell™ WM713 Wireless Touch Mouse

Owner's Manual



Information in this document is subject to change without notice.

© 2013 Dell Inc. All rights reserved.

Reproduction of these materials in any manner whatsoever without the written permission of Dell Inc. is strictly forbidden. Trademarks used in this text : Dell™ and the DELL logo are trademarks of Dell Inc.; Microsoft® and the Windows start button logo are either trademarks or registered trademarks of Microsoft Corporation in the United States and/or other countries.

Other trademarks and trade names may be used in this document to refer to either the entities claiming the marks and names or their products. Dell Inc. disclaims any proprietary interest in trademarks and trade names other than its own.

2013 - 05 Rev. A00

[Restrictions and Disclaimers](#)

The information contained in this document, including all instructions, cautions, and regulatory approvals and certifications, is provided by the supplier and has not been independently verified or tested by Dell. Dell cannot be responsible for damage caused as a result of either following or failing to follow these instructions.

All statements or claims regarding the properties, capabilities, speeds or qualifications of the part referenced in this document are made by the supplier and not by Dell. Dell specifically disclaims knowledge of the accuracy, completeness or substantiation for any such statements. All questions or comments relating to such statements or claims should be directed to the supplier.

[Export Regulations](#)

Customer acknowledges that these Products, which may include technology and software, are subject to the customs and export control laws and regulations of the United States ("U.S.") and may also be subject to the customs and export laws and regulations of the country in which the Products are manufactured and/or received. Customer agrees to abide by those laws and regulations. Further, under U.S. law, the Products may not be sold, leased or otherwise transferred to restricted end-users or to restricted countries. In addition, the Products may not be sold, leased or otherwise transferred to, or utilized by an end-user engaged in activities related to weapons of mass destruction, including without limitation, activities related to the design, development, production or use of nuclear weapons, materials, or facilities, missiles or the support of missile projects, and chemical or biological weapons.

Contents

Setup

- Charging Dell WM713 Wireless Touch Mouse
- Installing Dell WM713 Wireless Touch Mouse Software
- Pairing Dell WM713 Wireless Touch Mouse
- Configuring Dell WM713 Wireless Touch Mouse Settings

Features

- Top View
- Rear View
- Shortcut Gestures

Troubleshooting

Specifications

- General
- Electrical
- Physical Characteristics
- Environmental
- Bluetooth 3.0 Wireless

Statutory Information

- Warranty
- Regulatory
- Certifications

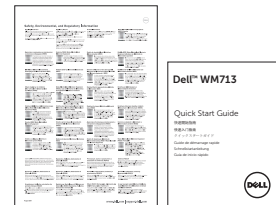
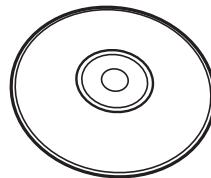
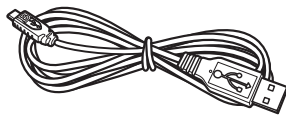
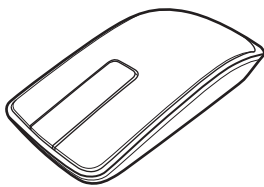
[Back to Contents Page](#)

Setup

System Requirements

- Microsoft Windows 8/7

Contents of the Box



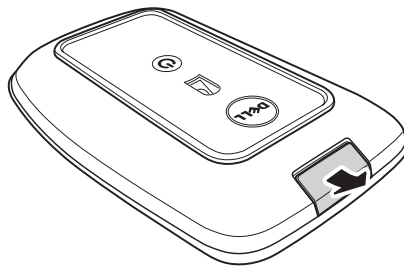
- One wireless mouse
- One USB cable
- CD-ROM
- Product documentation

NOTE: The documents that shipped with the mouse may vary based on your region.

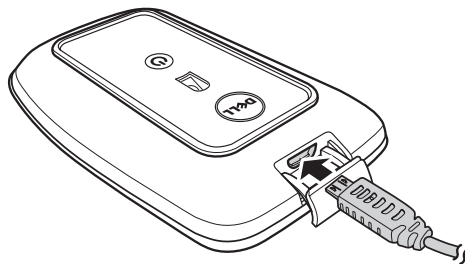
Charging Dell WM713 Wireless Touch Mouse

NOTE: Before using this touch mouse for the first time, you need to charge the mouse using the USB cable. Charge time is approximately five hours.

1. Open the USB port cover.

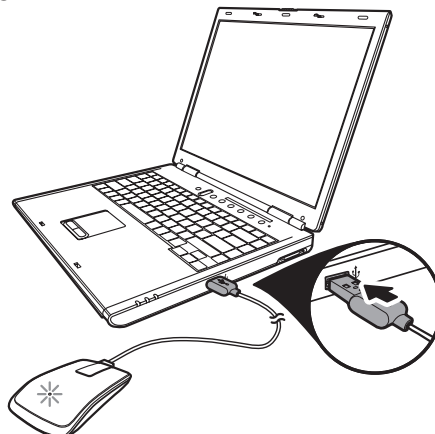


2. Connect one end of the USB cable to the mini USB port of the mouse.



3. Connect the other end of the USB cable to the computer.


- The battery status light turns amber indicating the battery is charging.
- The battery status light turns white indicating battery is charged completely. The battery status light is turned off when the usb cable is unplugged.



Installing Dell WM713 Wireless Touch Mouse Software

To customize the mouse settings, you need to install the ***Dell WM713 Wireless Touch Mouse*** software on your computer.

Insert the installation disc into the optical drive. The software installation wizard appears. Follow the instructions on the screen.

📌 **NOTE:** If it does not, press  on your keyboard, and then click **Run**, enter the drive letter of your optical drive (D: for example) and browse to the **setup.exe** file. Double-click the file for the wizard to appear. Follow the instructions on the screen.

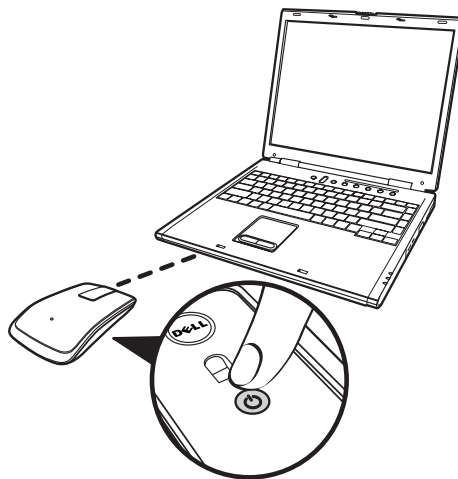
📌 **NOTE:** You can also download the software from dell support website:
www.dell.com/support

Pairing Dell WM713 Wireless Touch Mouse

The touch mouse needs to be paired and connected to your computer before it can be used.

Procedure

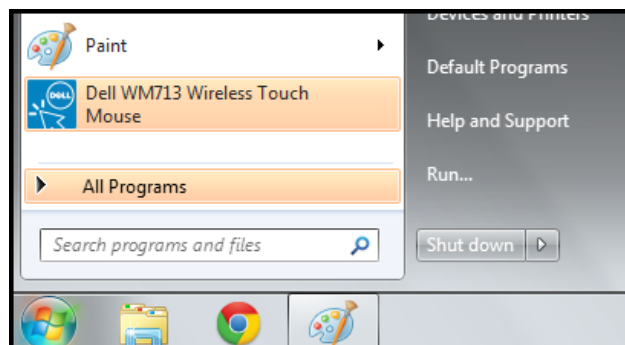
1. Turn on bluetooth on your computer.
2. Press and hold the power button on the mouse for two seconds.
The power-status light blinks blue, indicating the mouse is in pairing mode.





3. Launch the software:

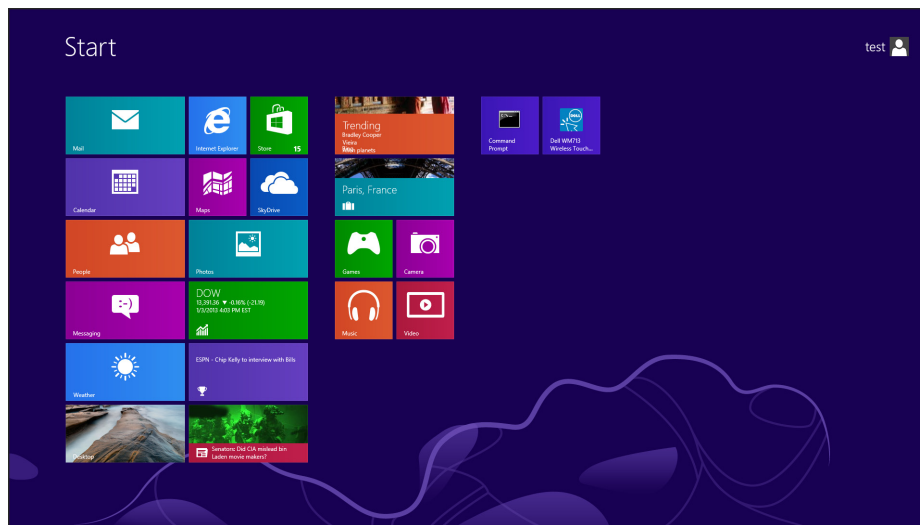
i) Win 7

Click **Start > Dell WM713 Wireless Touch Mouse**.

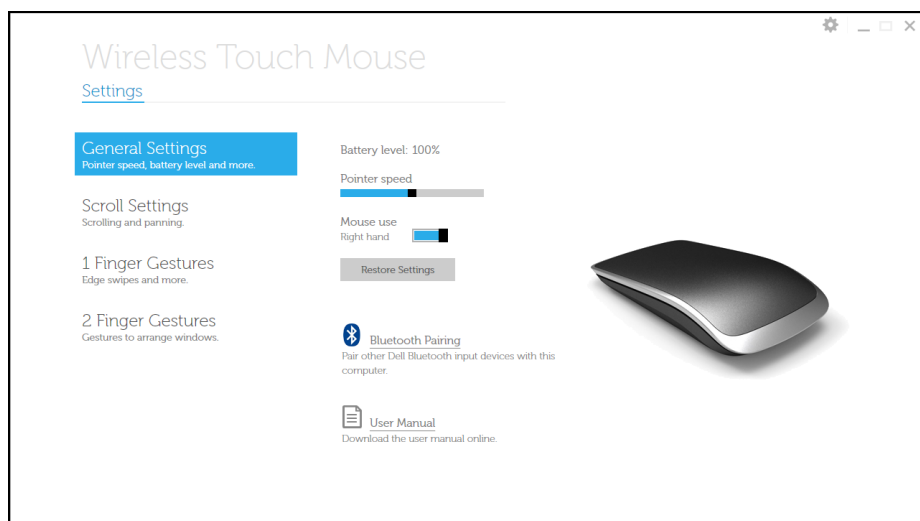


ii) Win 8

Press  on your keyboard, and then click Dell WM713 Touch Mouse icon .

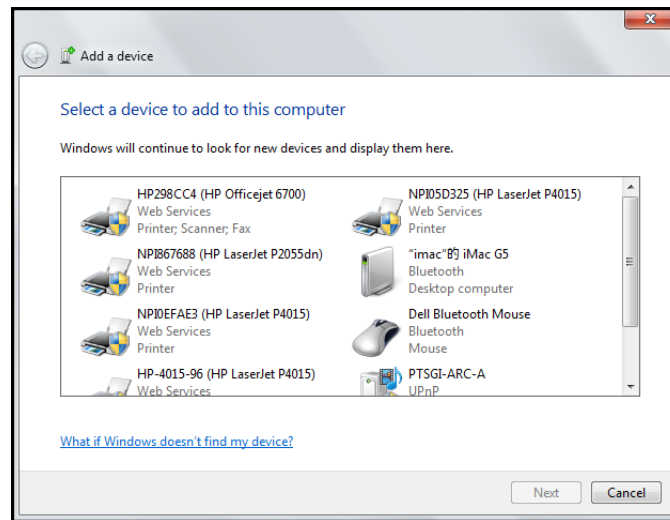


4. Click **General Settings**.

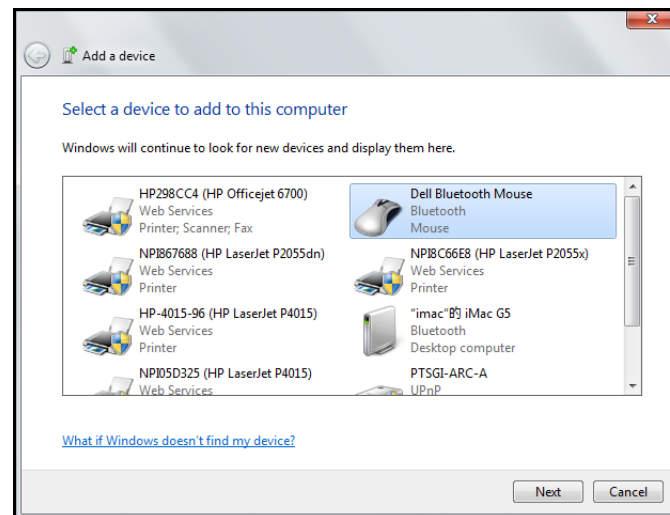


5. Click **Bluetooth Pairing**.

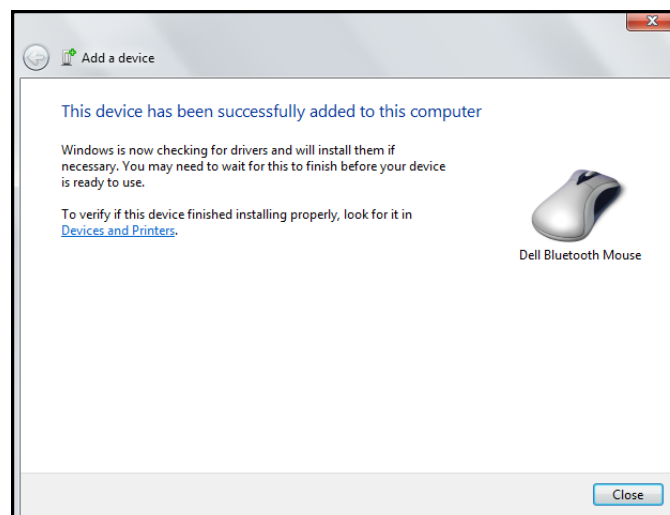
The detected devices appear on the screen.



6. Click **Dell Bluetooth Mouse** and click **Next** to continue.



7. Click **Close** to complete the pairing.



Configuring Dell WM713 Wireless Touch Mouse Settings



You can specify functions for each button, set touch scroll speed, and configure other preferences settings using **Dell WM713 Wireless Touch Mouse** software.

1. Launch the software:

i) Win 7

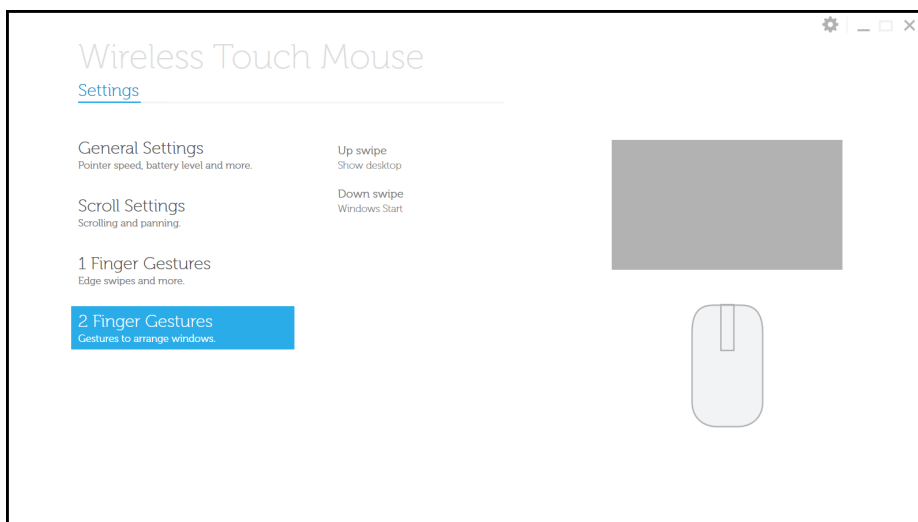
Click **Start** > **Dell WM713 Wireless Touch Mouse**.

ii) Win 8

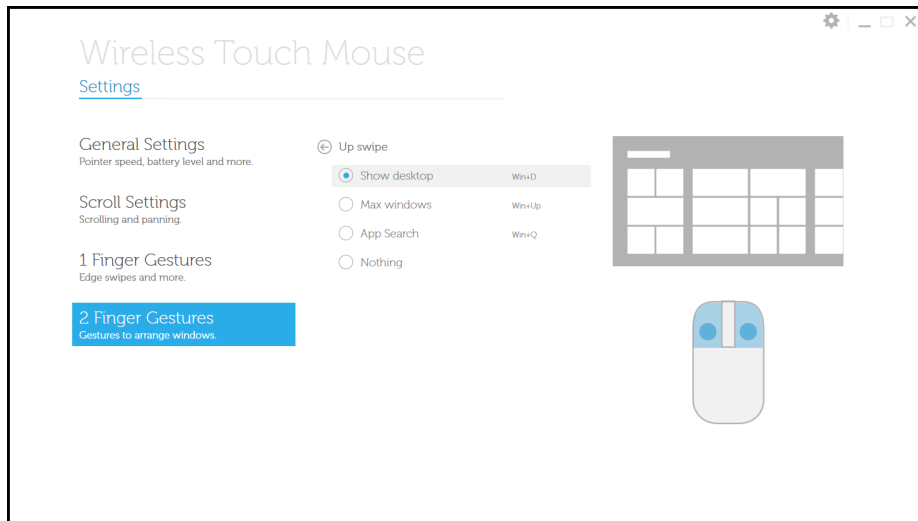
Press  on your keyboard, and then click Dell WM713 Touch Mouse icon .

2. To customize the setting, click the respective option and change the settings.

For example, to customize the Up Swipe action: Click **Up swipe** and then select one of the available options.



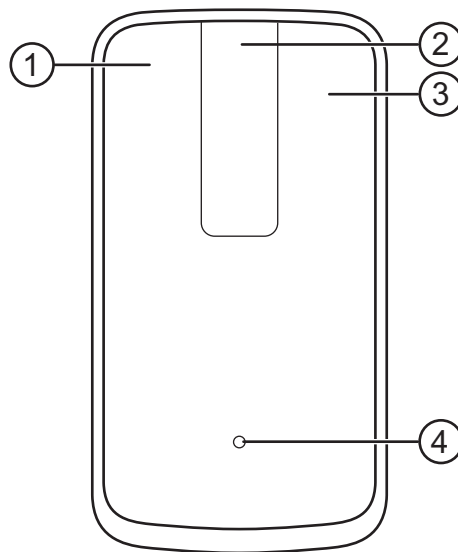
<Select setting item>



<Adjust setting>

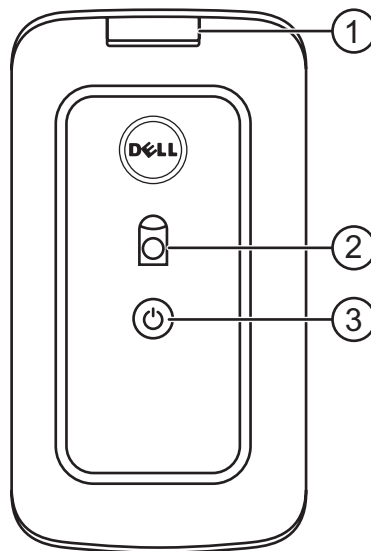
Features

Top View



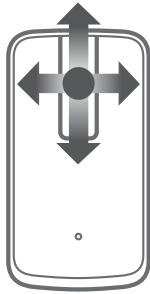
1. Left Mouse Click / Gesture Functions
2. Touch Scroll / Pan
3. Right Mouse Click / Gesture Functions
4. Battery status indicator
 - **Blinking Amber:** Low Battery
 - **Solid Amber:** Battery Charging
 - **Solid White:** Charging Complete

Rear View



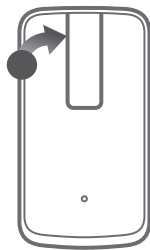
1. USB port cover
2. Optical sensor
3. Power button and power status light
 - **Solid White:** Power on
 - **Blinking Blue:** In pairing mode

Shortcut Gestures

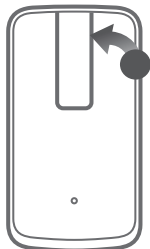


Scroll and Pan
four-way scroll

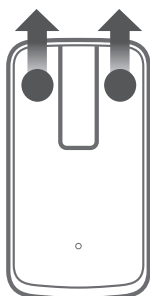
(Windows 7 and 8)



App Switch (Windows 8 only) /
Forward (Windows 7 only)
Swipe from left edge



Windows Charms (Windows 8 only) /
Back (Windows 7 only)
Swipe from right edge



Search (Windows 8 only) /
Show desktop (Windows 7 only)
Swipe up



Windows Charms (Windows 8 only) /
Back (Windows 7 only)
Swipe down

Troubleshooting

If you have problems with your mouse:

- Check if the mouse battery level is low.
- Check if the mouse is turned on.
- Use the mouse on a clean, flat, and non-slippery surface in order to ensure smooth and accurate cursor action.
- Ensure bluetooth on your computer is turned ON before using device.
- If your mouse fails to reconnect after being idle for some time, you may need to restart your computer or turn the Bluetooth connection off and back on.
- For further assistance with any other questions you may have, please contact our customer service or your dealer for technical support.

Specifications

General

Model Number	WM713
Connection Type	Bluetooth 3.0
Supported Operating Systems	Microsoft Windows 7 SP1 or later, Windows 8

Electrical

Battery life	One month when fully charged
Battery type	Lithium-ion (embedded)

Physical Characteristics

Height	24.90 mm
Connection Type	58.4 mm
Length	108.10 mm
Weight	118 g

Environmental

Operating temperature	0 °C to 40 °C
Storage temperature	-40 °C to 65 °C
Operating humidity	90% maximum relative humidity, non condensing
Storage humidity	90% maximum relative humidity, non condensing

Bluetooth 3.0 Wireless

Radio transmission

The baseband transmit data is GFSK
Modulated in the 2.4 GHz ISM band

Range

Up to 10 m radio range.
No performance degradation up to max radio
range (10 m).

[Back to Contents Page](#)

Statutory Information

Warranty

Limited Warranty and Return Policies

Dell-branded products carry a 1-year limited hardware warranty.

If purchased together with Dell system, it will follow the system warranty.

For U.S. customers:

This purchase and your use of this product are subject to Dell's end user agreement, which you can find at www.dell.com/terms. This document contains a binding arbitration clause.

For European, Middle Eastern and African customers:

Dell-branded products that are sold and used are subject to applicable national consumer legal rights, the terms of any retailer sale agreement that you have entered into (which will apply between you and the retailer) and Dell's end user contract terms. Dell may also provide an additional hardware warranty – full details of the Dell end user contract and warranty terms can be found by going to www.dell.com, selecting your country from the list at the bottom of the "home" page and then clicking the "terms and conditions" link for the end user terms or the "support" link for the warranty terms.

For non-U.S. customers:

Dell-branded products that are sold and used are subject to applicable national consumer legal rights, the terms of any retailer sale agreement that you have entered into (which will apply between you and the retailer) and Dell's warranty terms. Dell may also provide an additional hardware warranty – full details of Dell's warranty terms can be found by going to www.dell.com, selecting your country from the list at the bottom of the "home" page and then clicking the "terms and conditions" link or the "support" link for the warranty terms.

Regulatory

Mouse Regulatory Model: WM713

Regulatory Information

These devices comply with Part 15 of the FCC Rules. Operation of the devices is subject to the following two conditions : (1) The devices may not cause harmful interference, and (2) The devices must accept any interference that may cause undesired operation.

This equipment has been tested and found to comply with the limits for a Class B digital device, pursuant to Part 15 of the FCC Rules. These limits are designed to provide reasonable protection against harmful interference in a residential installation. This equipment generates, uses, and can radiate radio frequency energy. If the equipment is not installed and used in accordance with the instructions, the equipment may cause harmful interference to radio communications. There is no guarantee, however, that such interference will not occur in a particular installation. If this equipment does cause harmful interference to radio or television reception (which can be determined by turning the equipment off and on), the user is encouraged to try to correct the interference by taking one or more of the following measures:

- Relocate this device.
- Increase the separation between the device and the receiver.
- Connect the device into an outlet on a circuit different from that of other electronics.
- Consult the dealer or an experienced radio technician for help.

Agency Approval

C-Tick, FCC, CE, CB, UL, Canada IC, China SRRC, India WPC, Japan MIC, Thailand NTC, Singapore iDA, Malaysia SIRIM, Indonesia SDPPI, Russia GOST, Philippine NTC, Saudi Arabia (CITC & SASO), UAE TRA, Kuwait MOC, South Africa ICASA.

[Back to Contents Page](#)

Certifications

Microsoft WHQL Logo

The Dell KM714 Wireless Keyboard and Mouse have passed WHQL logo testing by Microsoft Windows Hardware Quality Labs.

WHQL Logo is a certification scheme operated by Microsoft Windows Hardware Quality Labs. In this case it ensures that hardware is compatible with Microsoft Operating Systems. The keyboard and mouse are qualified through the use of WHQL test kits and have been included in the [Microsoft Hardware Compatibility List](#).